

Facilities Master Plan Stakeholder Meeting

Calistoga Joint Unified School District

December 2, 2020



Facilities Master Plan



Integrated Educational
Planning and Programing





Agenda

- Facilities Master Plan (FMP) current status
- Data and the influences it has on the FMP
- Draft site assessments and proposed layouts



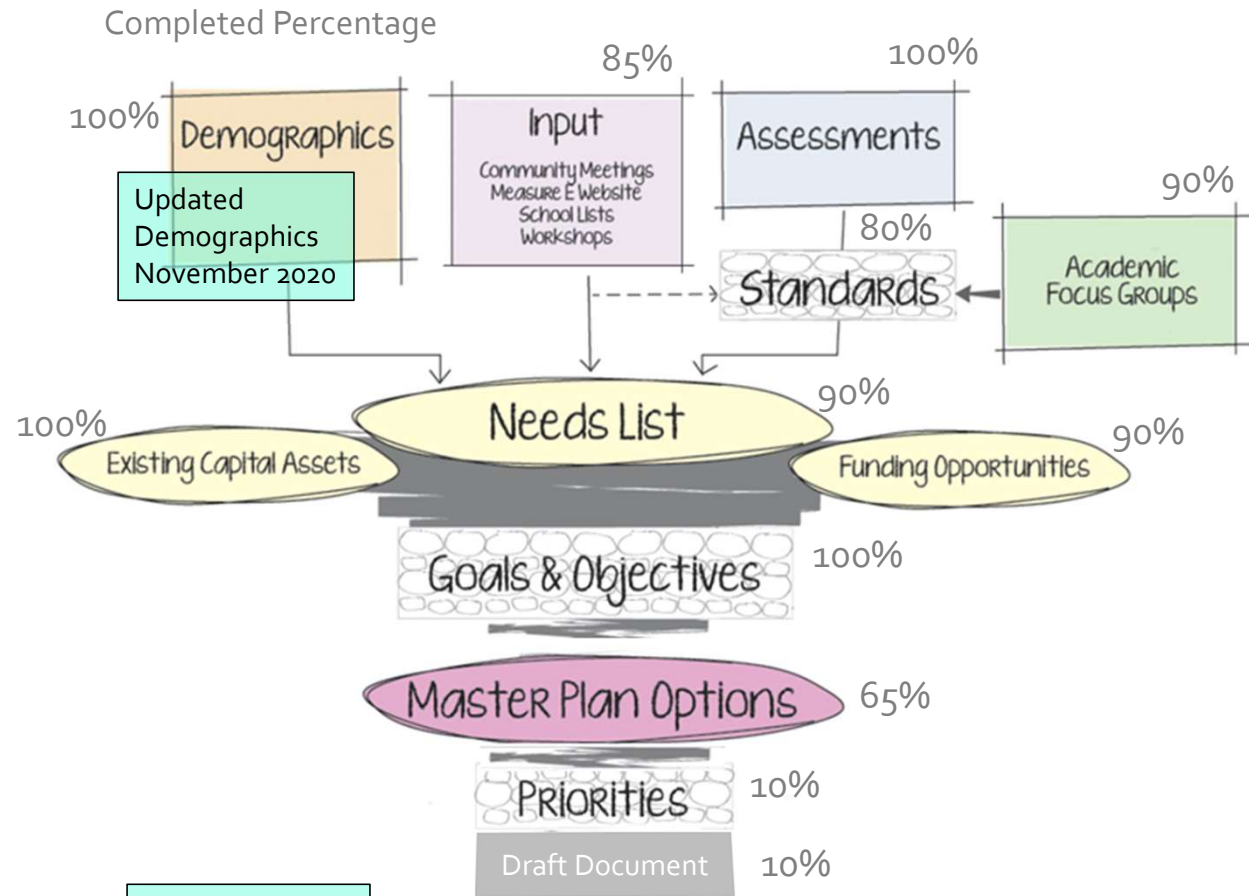
Integrated Educational
Planning and Programing





Facilities Master Plan Process Began: July 2019

Breaks:
Kincade Fire of 2019,
COVID-19, Glass Fire
of 2020



Target Date:
March 2021



Integrated Educational
Planning and Programming





Facilities Master Plan Process

A master plan identifies where you want to take your facilities and develops a plan to get there.

Data collection and analysis creates the baseline for developing a plan.

This has included:

- Demographics - current and projected
- Current assessments of the District's facilities - condition and functionality
- Input from:
 - Community survey and meeting
 - Focus meetings with district staff - future academic program direction
 - Board of Trustees
 - FMP Steering Committee
- Funding opportunities



Integrated Educational
Planning and Programming





District FMP Goals

Our school facilities will:

- Be planned spaces, designed to promote collaboration and innovation that will support successful instruction and learning at all grade levels
- Be planned and designed to assist students in becoming influential contributors within our global society
- Be responsive in challenging students to be empowered by choosing active, healthy life choices
- Be safe while providing positive environments that celebrate the culturally diverse District



Integrated Educational
Planning and Programing

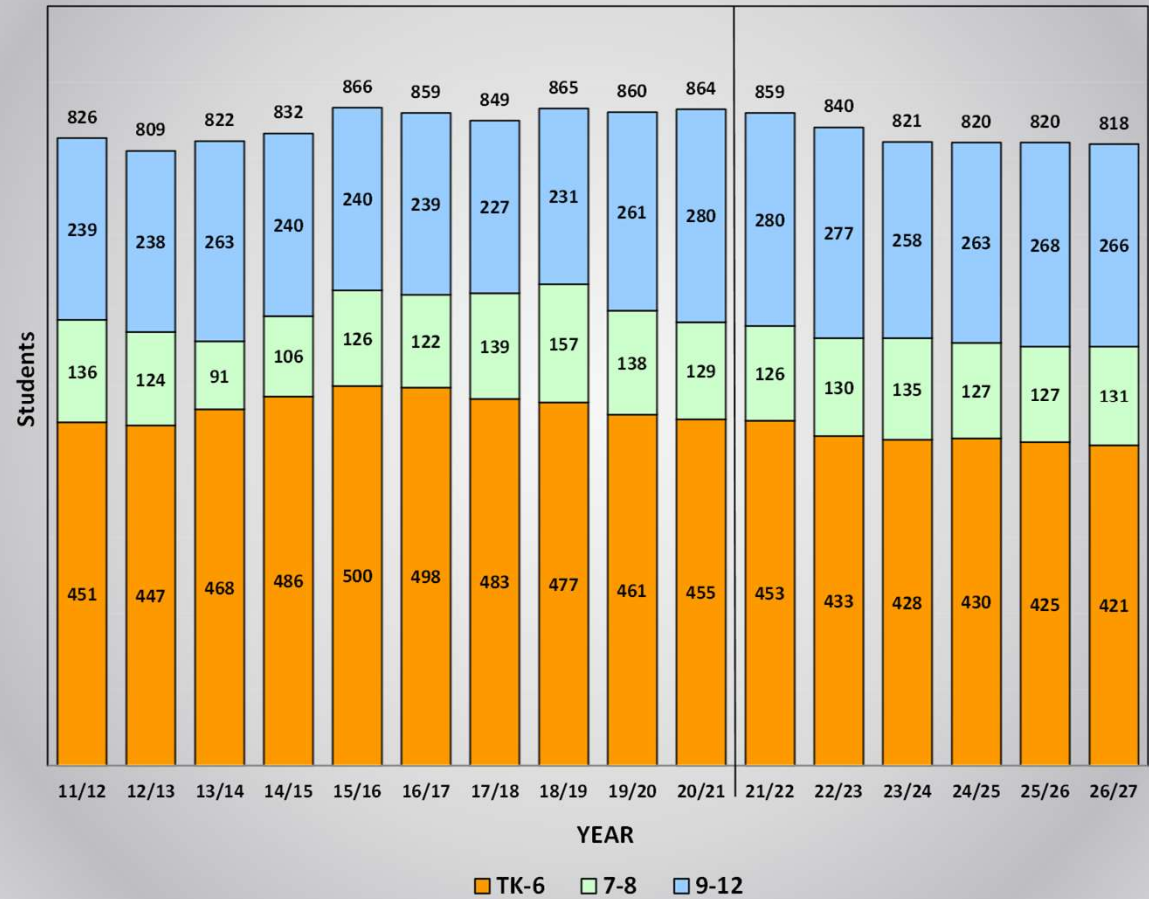




Demographics Summary

Updated
November 2020

10 Year Enrollment History & 6 Year Enrollment Projection



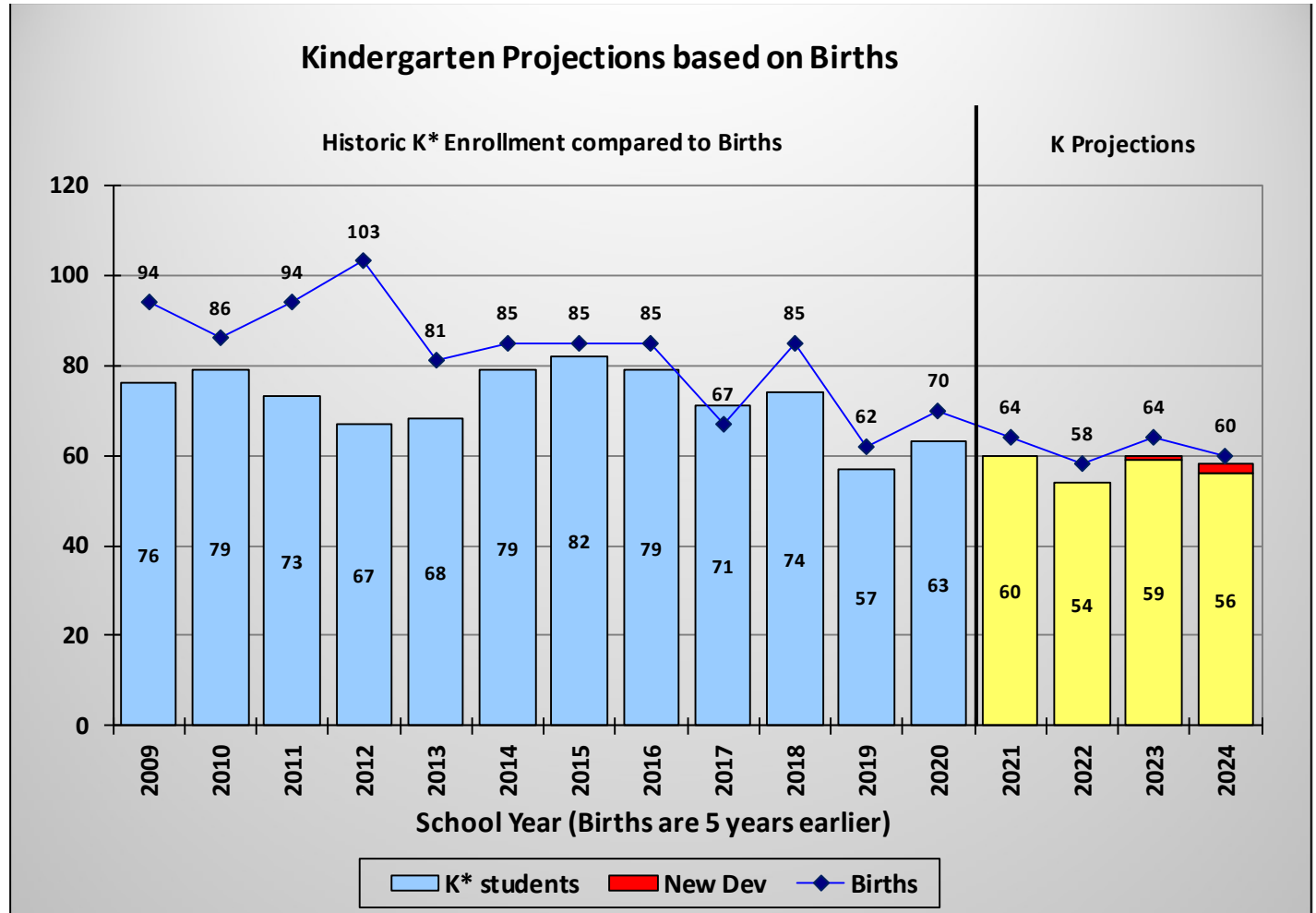
Integrated Educational
Planning and Programming





Demographics Summary

Updated
November 2020



*Kindergarten Totals may include some Transitional Kindergarten students for some of the past years to more accurately correlate a 12-month period of births to a 12-month period of enrollment.



Integrated Educational
Planning and Programming

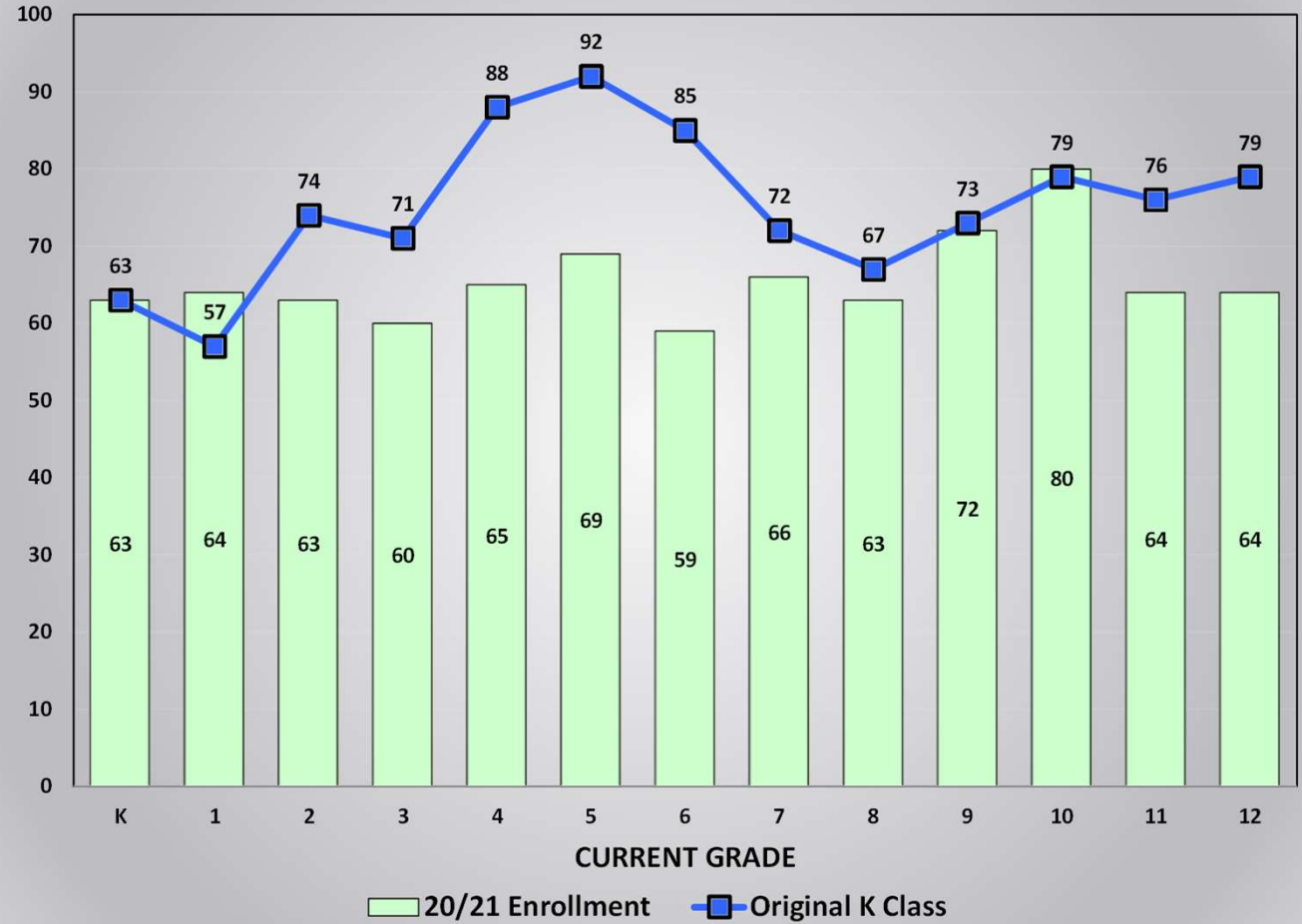




Demographics Summary

Updated
November 2020

Cohort Change Since Kindergarten



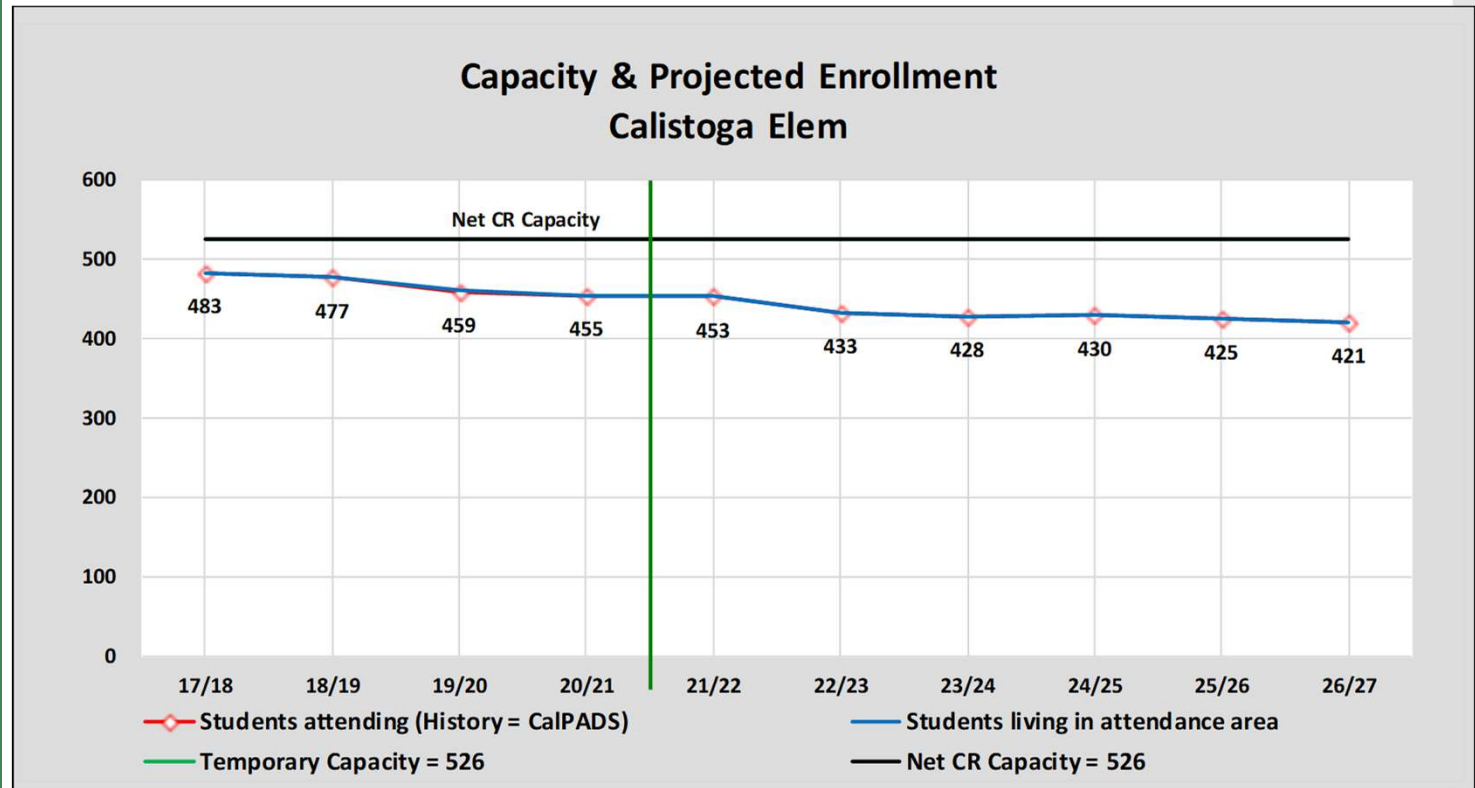
Integrated Educational
Planning and Programming





Demographics Summary

Updated
November 2020



Loading K-3 = 24; 4-6 = 30



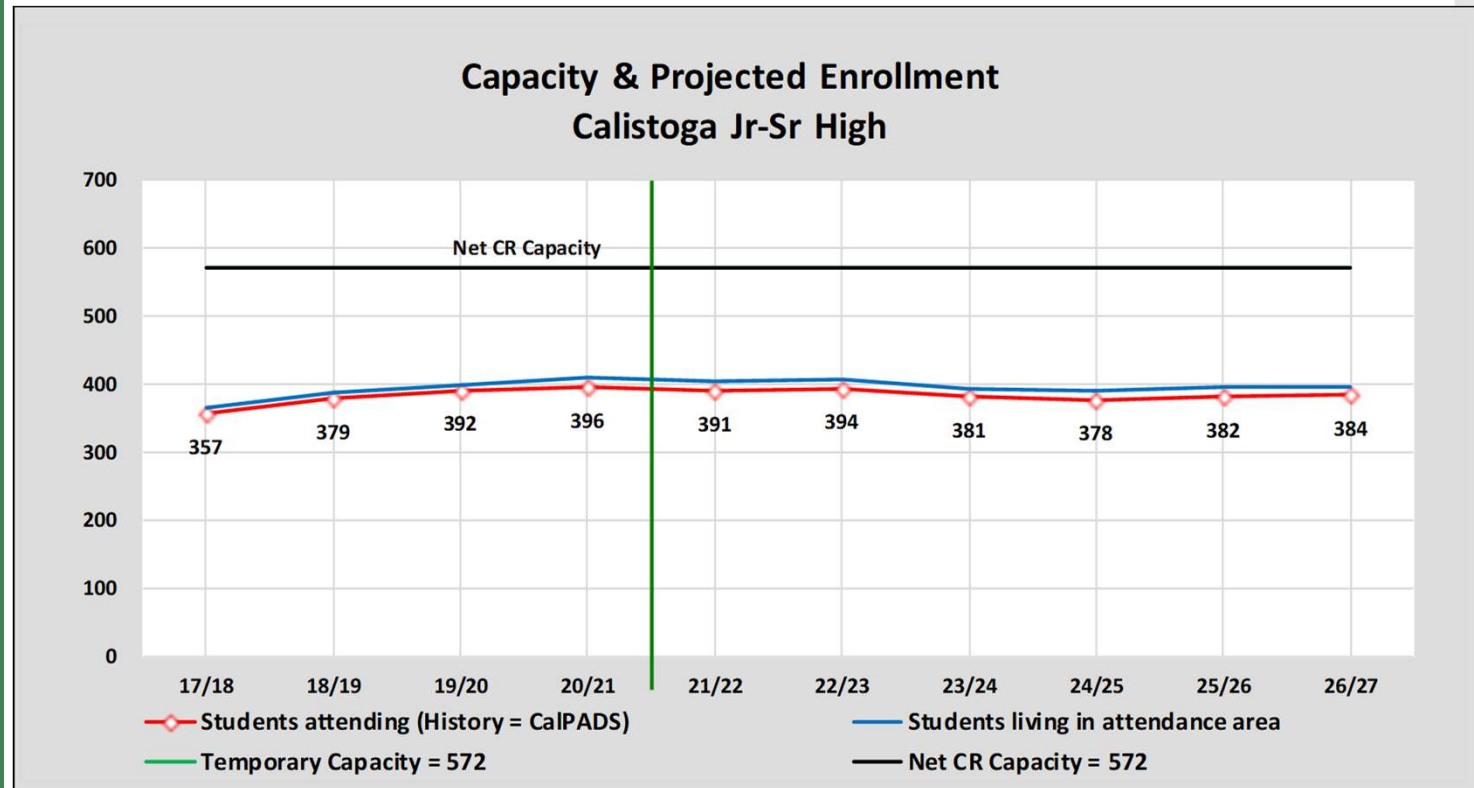
Integrated Educational
Planning and Programming





Demographics Summary

Updated
November 2020



Loading: 7-12 = 29



Integrated Educational
Planning and Programming





Demographics Summary

Updated
November 2020

School Facility Utilization

| | Net | Net CR | 2020/21 | 2026/27 | 2020/21 | 2026/27 |
|---------------------------|-------------------|-----------------|---------------------------|-----------------------------|----------------------------|------------------------------|
| <u>Elementary Schools</u> | <u>Classrooms</u> | <u>Capacity</u> | <u>Current Enrollment</u> | <u>Projected Enrollment</u> | <u>Current Utilization</u> | <u>Projected Utilization</u> |
| Calistoga Elem | 26 | 684 | 455 | 421 | 66.5% | 61.5% |
| Sub-Totals | 26 | 684 | 455 | 421 | 66.5% | 61.5% |
| <u>High Schools</u> | | | | | | |
| Calistoga Jr-Sr High | 23 | 667 | 396 | 384 | 59.4% | 57.6% |
| Sub-Totals | 23 | 667 | 396 | 384 | 59.4% | 57.6% |
| <u>Other Schools</u> | | | | | | |
| Palisades High | 1 | 20 | 13 | 13 | 65.0% | 65.0% |
| Sub-Totals | 1 | 20 | 13 | 13 | 65.0% | 65.0% |
| District Totals | 50 | 1,371 | 864 | 818 | 63.0% | 59.7% |



Integrated Educational
Planning and Programming





Assessment Summary

Functionality

Items assessed included the following:

1. Design / Size / Flexibility
2. Technology / Electrical
3. Special Utilities
4. Storage
5. Finishes
6. Daylight
7. Air Quality

Items assessed included the following:

1. Parking Spaces
2. Drop Off
3. Bikes and Walkability
4. Adjacencies
5. Identified and Controlled Front Entrance
6. Hidden Spaces
7. Outdoor Seating
8. Grass Fields
9. Equipment
10. Hardcourt
11. Track
12. Bleachers

Condition

Items assessed included the following:

1. Windows
2. Ceiling
3. Flooring
4. Doors
5. HVAC
6. Electrical Infrastructure
7. Interior and Exterior Finishes

Items assessed included the following:

1. Fire Alarm
2. Bell Clock
3. Technology
4. Hydraulic
5. ADA

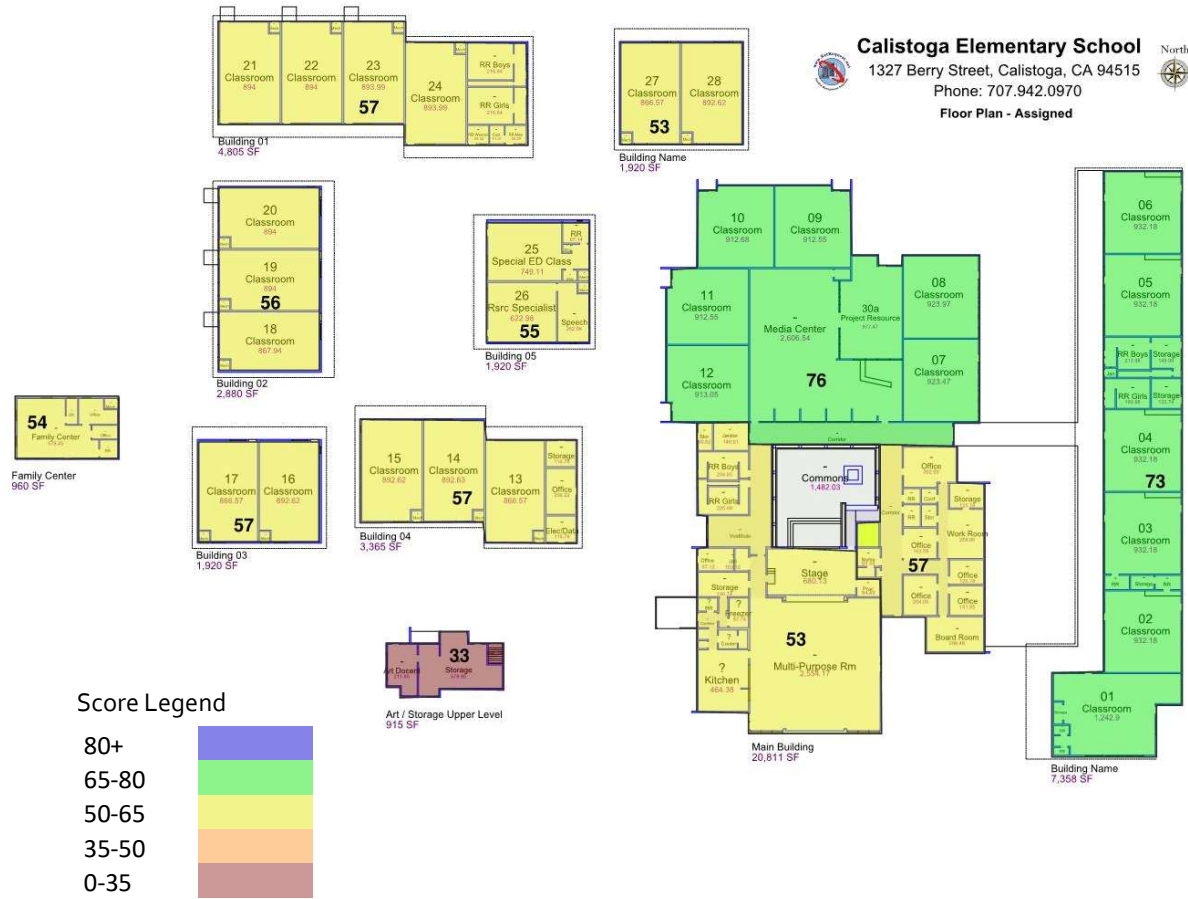


Integrated Educational Planning and Programming





Assessment Summary Combined Scores



Integrated Educational
Planning and Programming



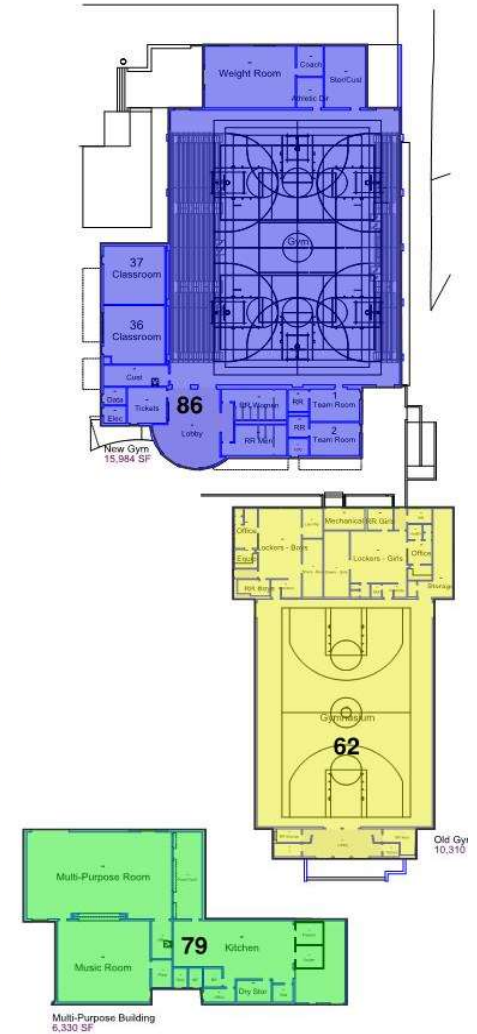
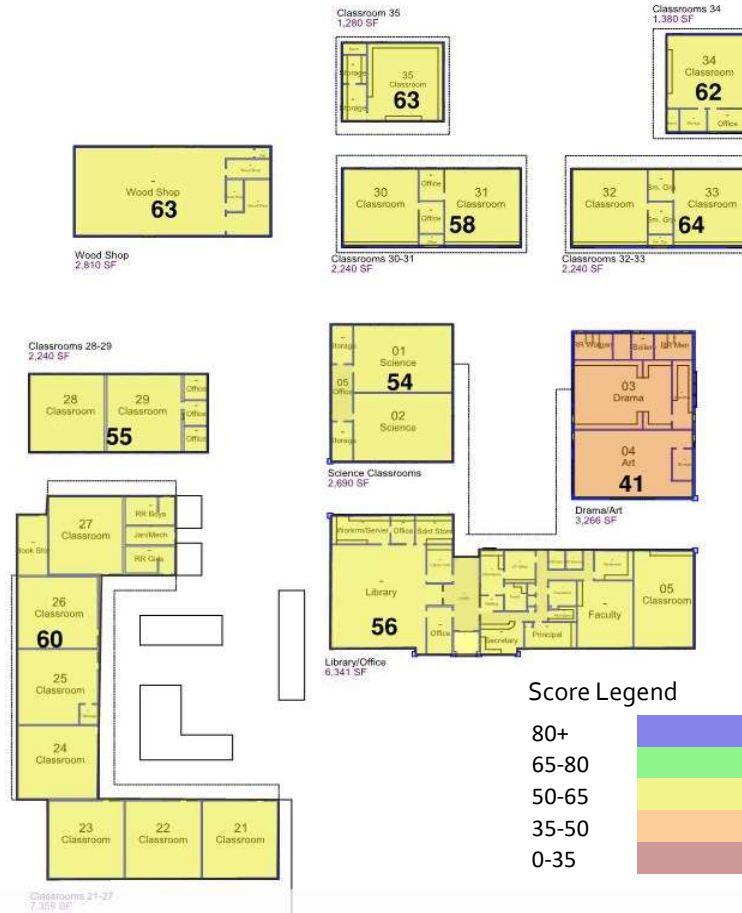


Calistoga Junior High / High School
 1608 Lake Street, Calistoga, CA 94515
 Phone: 707.942.6278
Floor Plan - Assigned



Assessment Summary

Combined Scores





Community Input Big Picture

At both campuses:

- Currently spaces are seen as somewhat flexible. The desire is to make all spaces and furniture flexible
- Most of the educational delivery is done in a "Broadcast" style, however, the District would like to move to a more "student-centered" education
- Storage is limited
- The District is interested in adding or improving outdoor learning, exterior appearance, drop off and pick up, playgrounds and athletics improvements
- Staff lounges are too small
- Science rooms are not adequate
- A theater, performance center is desired
- Staff restrooms are in poor condition and there are not enough of them

CES Campus:

- CES is currently seen as traditional but initiating change. In five years they would like to be 21st Century and Beyond
- Missing Rooms
 - Sensory Room
 - Occupational Therapy
 - Science Storage
 - PE (CES) Gym
 - Maker Space
 - Meeting Space for ALL

CJSHS Campus:

- CJSHS is currently seen as initiating change. In five years they would like to be 21st Century and Beyond
- Missing Rooms
 - Science
 - Project Room
 - Occupational Therapy
 - Music Room Updates



Integrated Educational
Planning and Programming





Draft Site Assessments and Proposed Layouts

The following slides represent a graphical depiction of the data.

The **Baseline Plan** shows current status of the site and the buildings.

The **Site Usage Plan** shows the current facility functions.

The **Building Analysis/Input Plan** brings forward several of the issues that have been raised during the various input meetings.



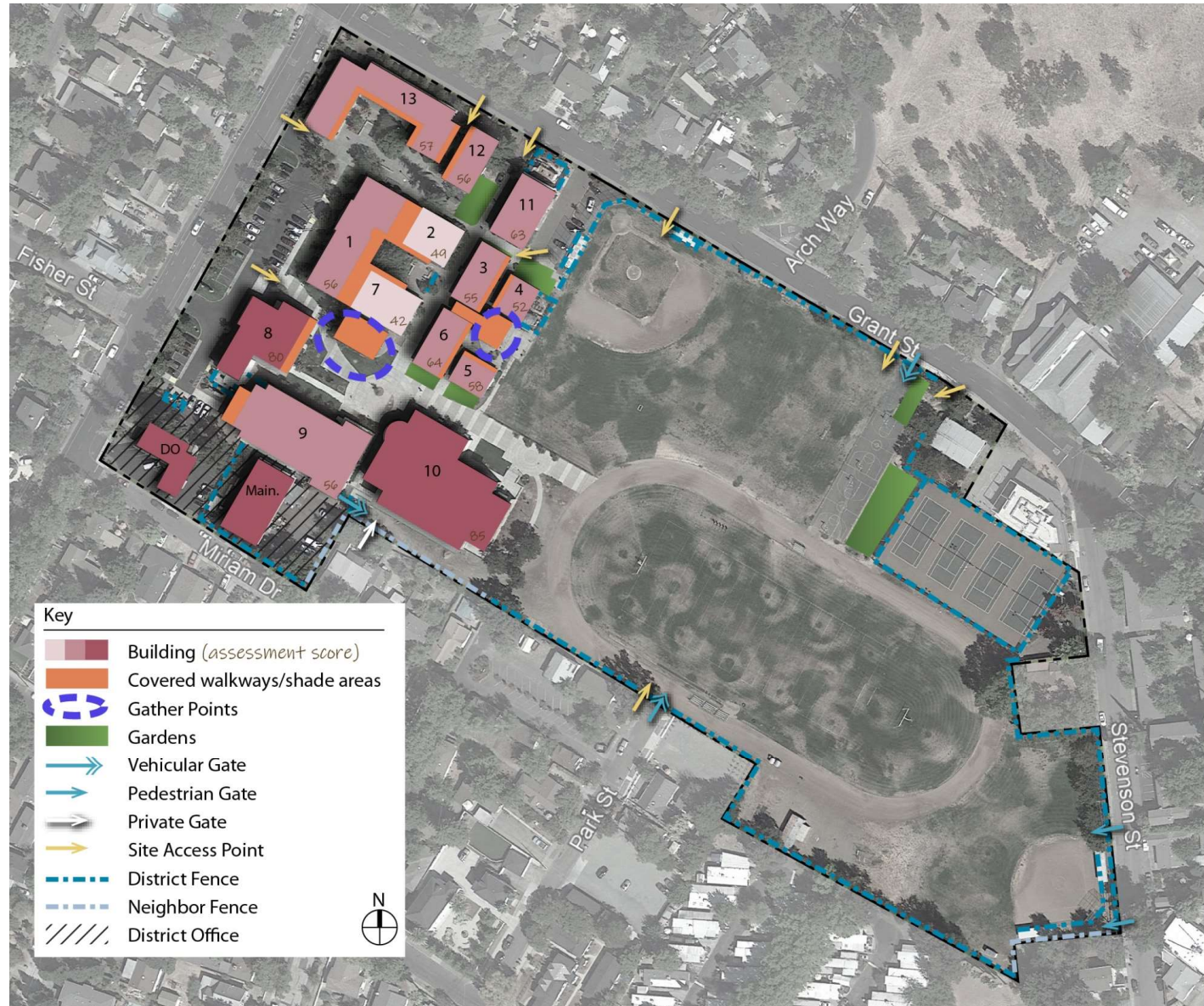
Integrated Educational
Planning and Programing





Site Analysis

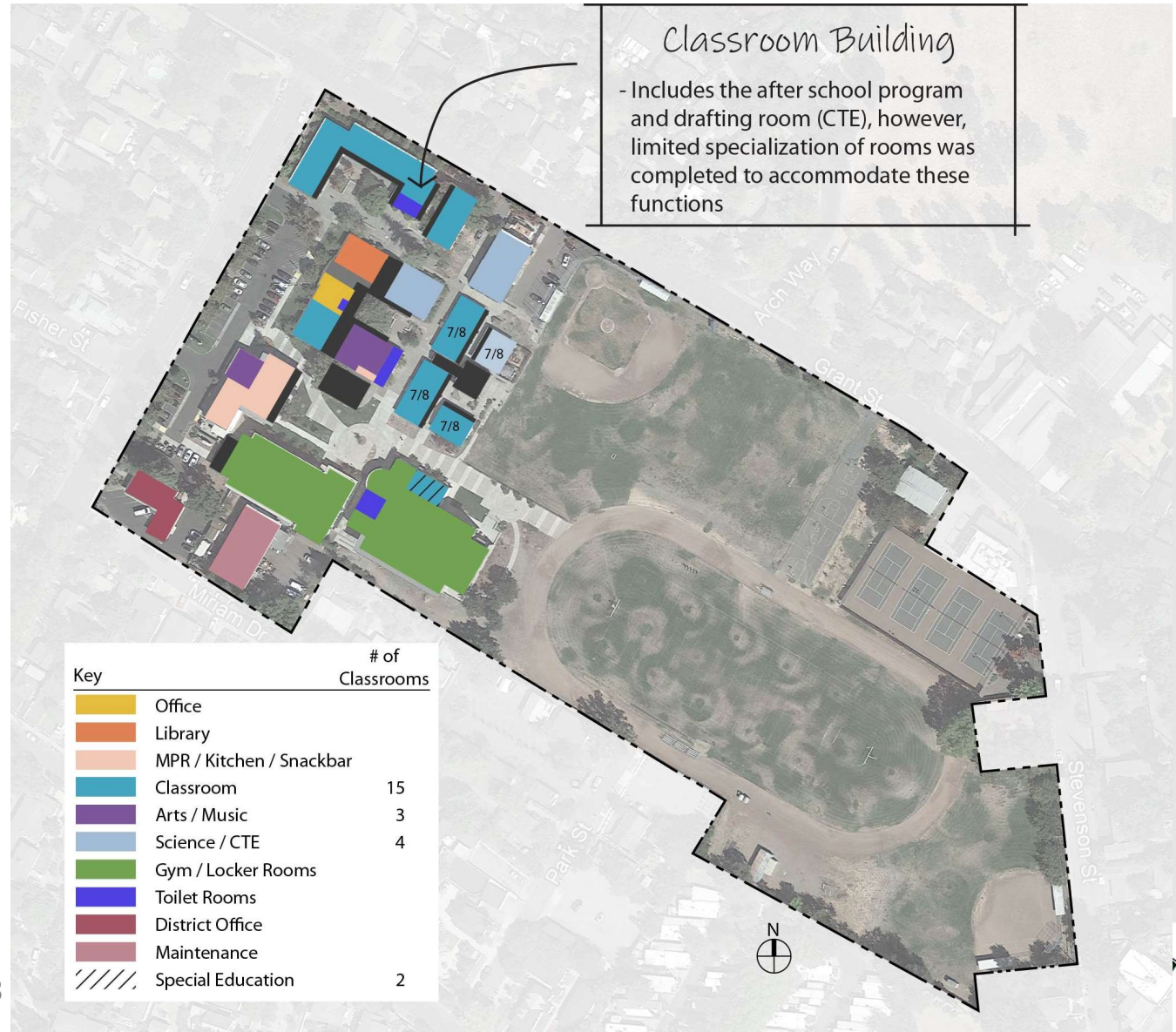
Baseline Plan Calistoga Junior/Senior High School





Current Site Usage

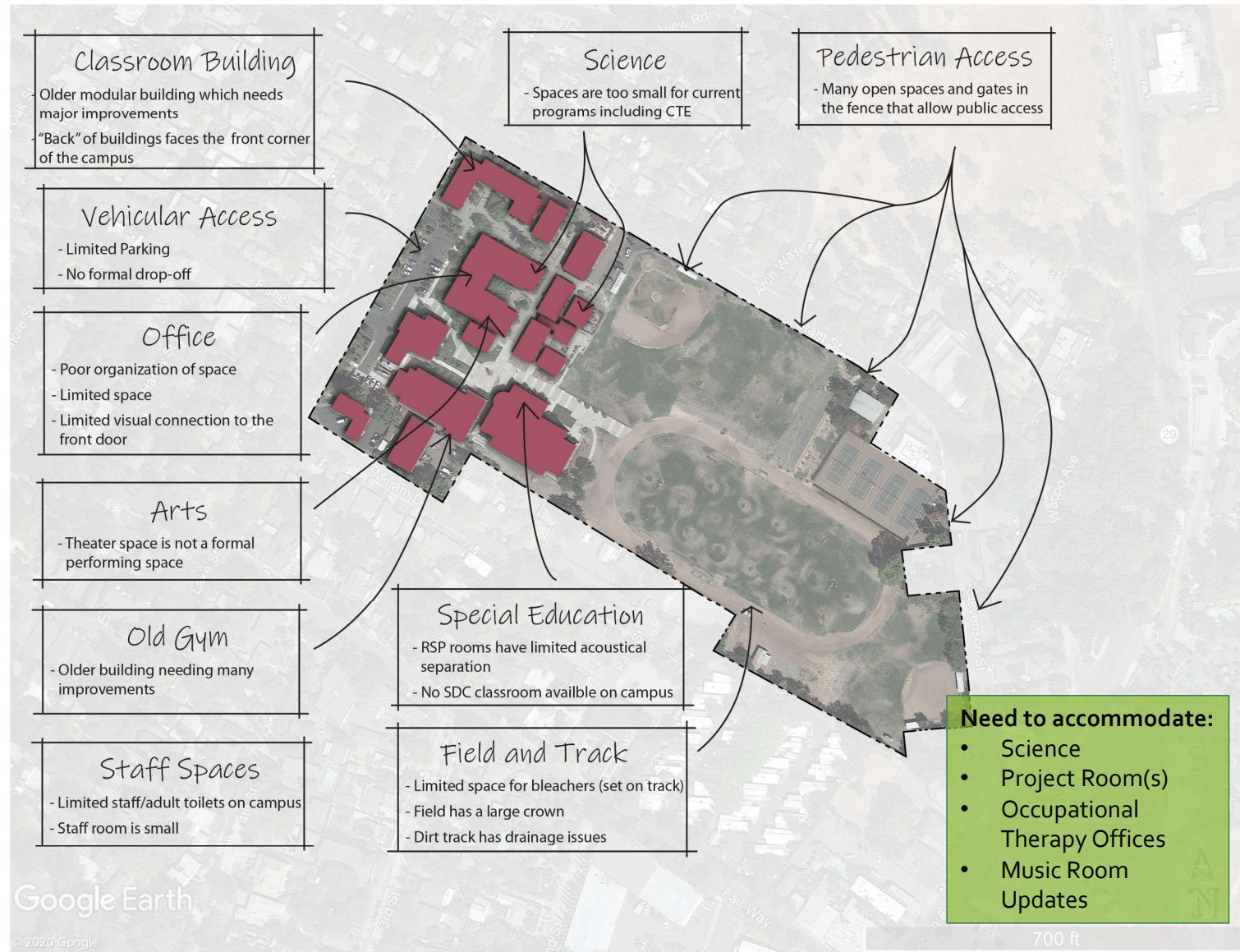
Calistoga Junior/Senior High School





Building Analysis/ Input

Calistoga Junior/Senior High School





Building Analysis/ Input

Calistoga Elementary School

- Cannot build (new or an addition) in the flood area
- Expansion of this campus is not possible





Calistoga Elementary School

Flood Hazard Map

USA Flood Hazard Areas

- 1% Annual Chance Flood Hazard
- 0.2% Annual Chance Flood Hazard
- Regulatory Floodway
- Special Floodway
- Future Conditions
- 1% Annual Chance Flood Hazard
- Area with Reduced Risk Due to Levee



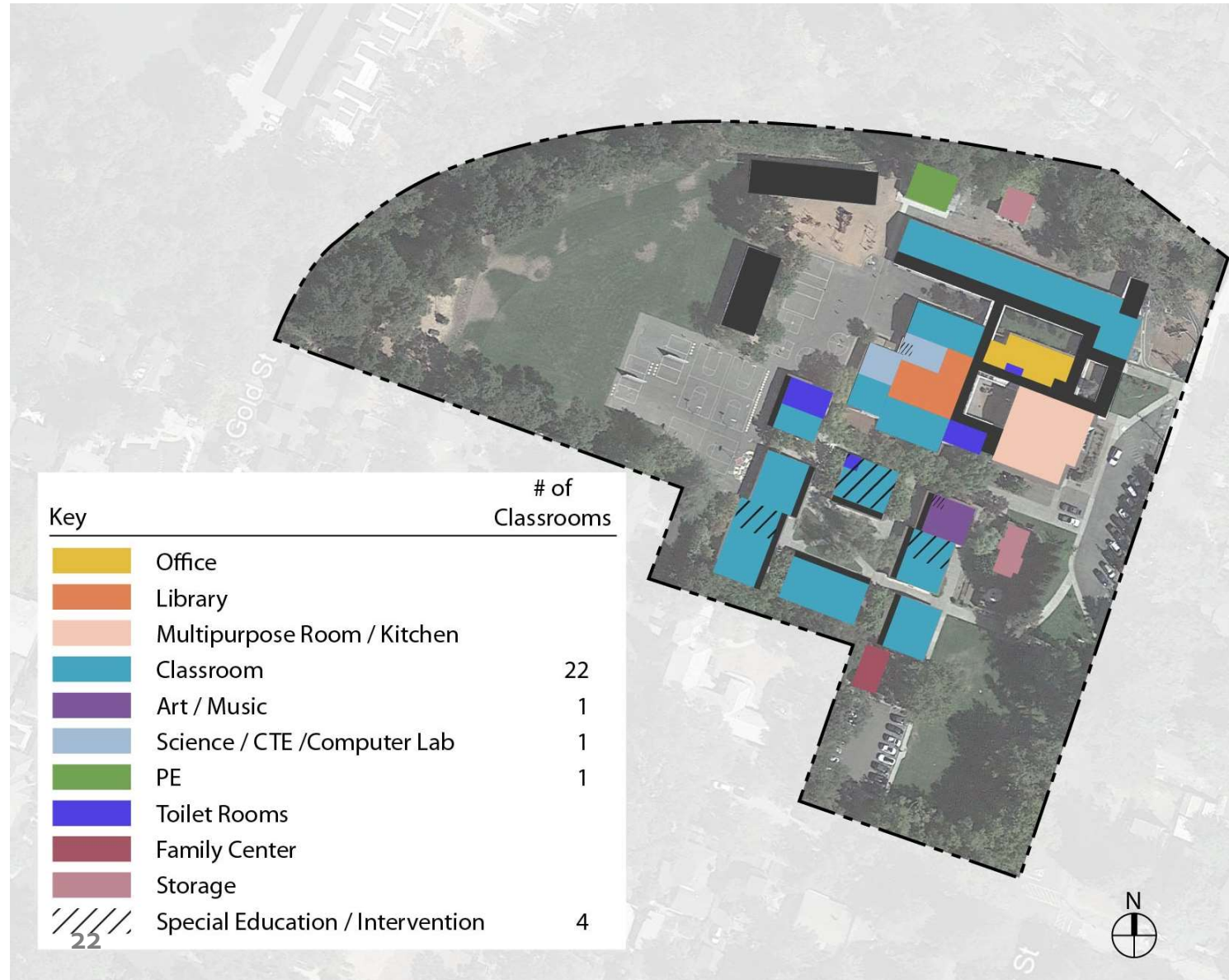
Integrated Educational
Planning and Programing





Current Site Usage

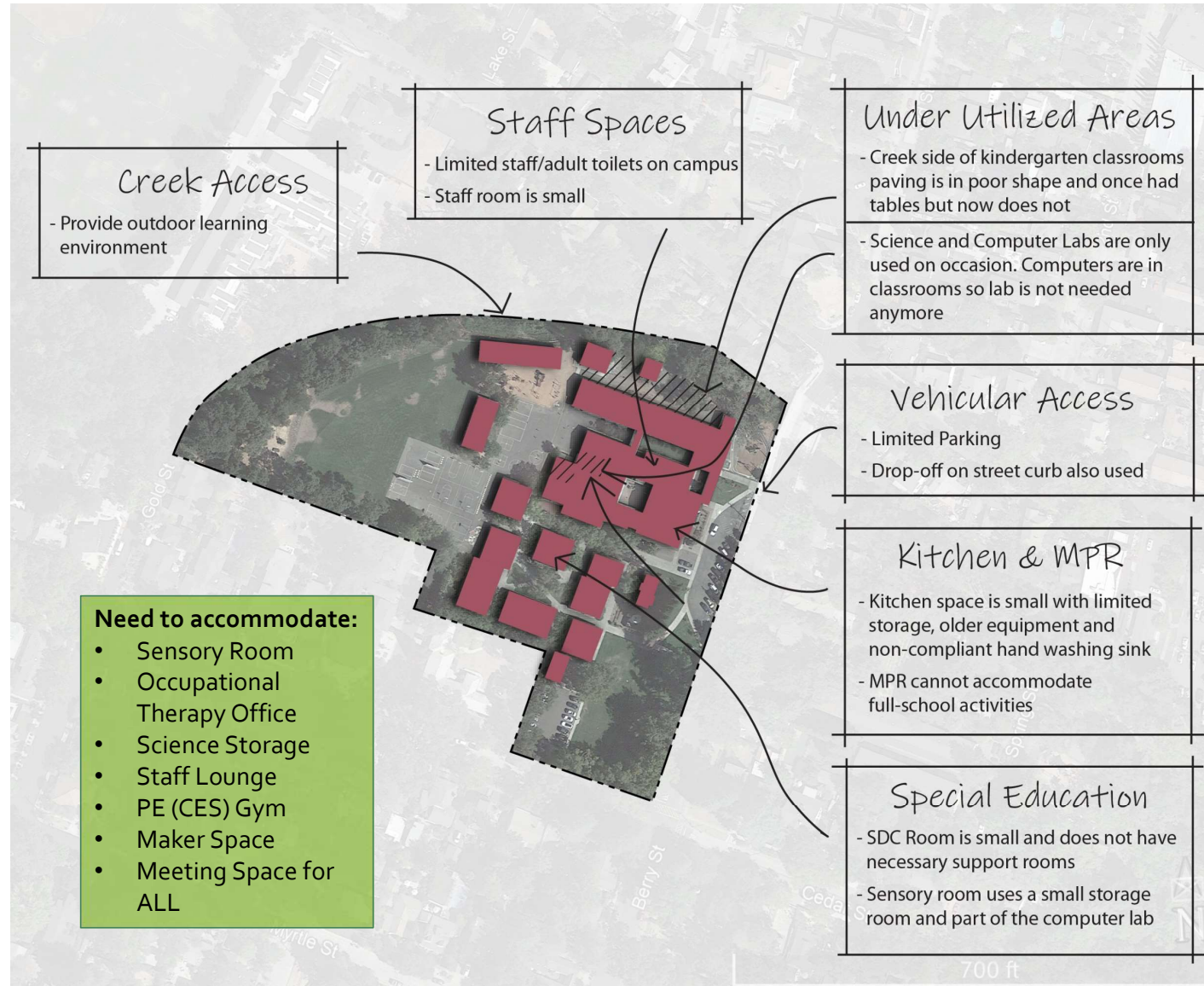
Calistoga Elementary School





Building Analysis/ Input

Calistoga Elementary School





Draft Plans

The following slides represent a **Draft Plan** of both the Junior/Senior High School site and the Elementary School site.

The plans are based on:

- The goals for the Facilities Master Plan
- Demographics current and projected
- Facility assessments
- Input from staff and community
- Funding opportunities

A third site, the "Gallis Property" that is owned by the District has been included with comments.

The draft plans are subject to modification from an ongoing effort to engage the community, the District staff, and the Board of Trustees.



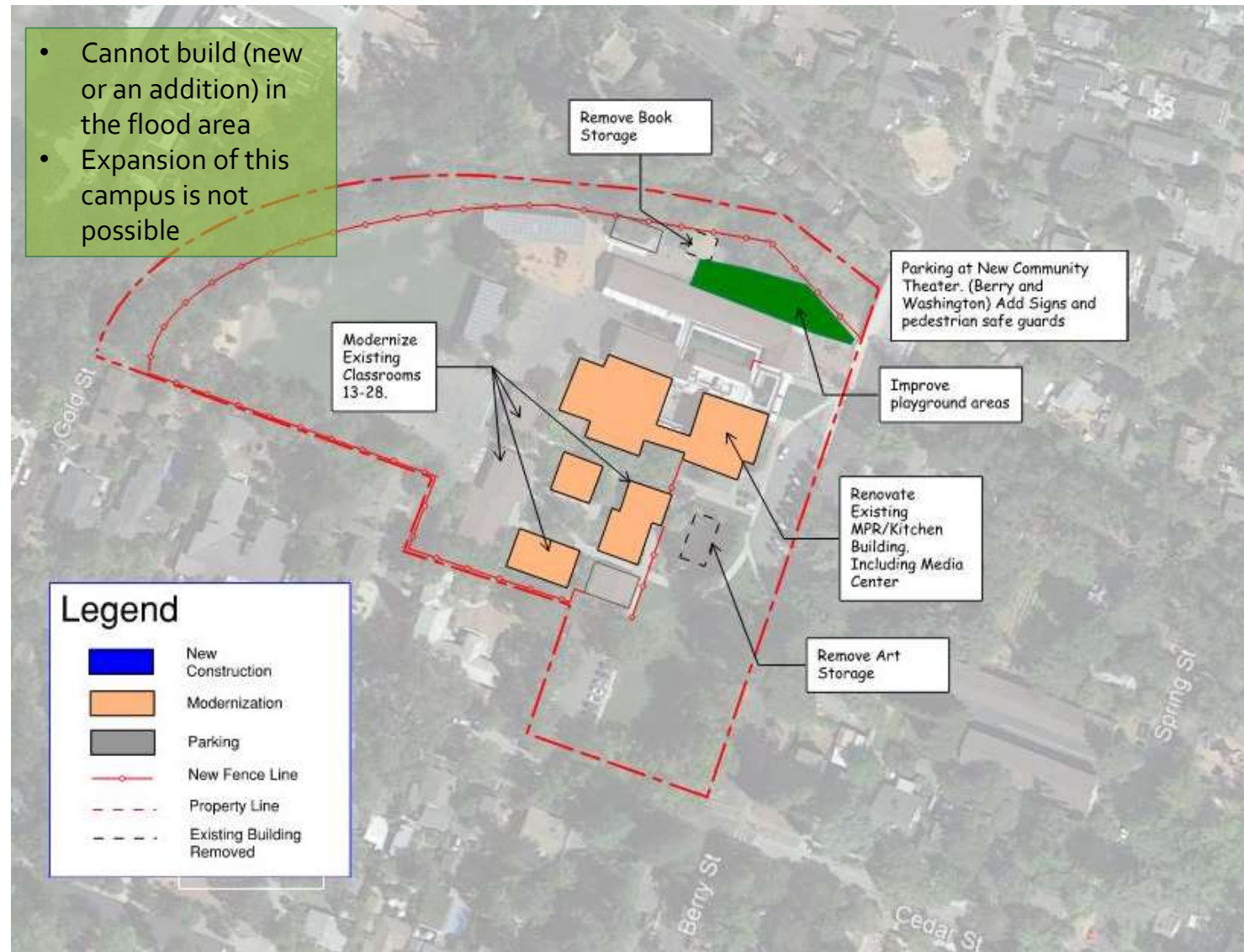
Integrated Educational
Planning and Programing





Calistoga Elementary School Draft Plan

- Cannot build (new or an addition) in the flood area
- Expansion of this campus is not possible

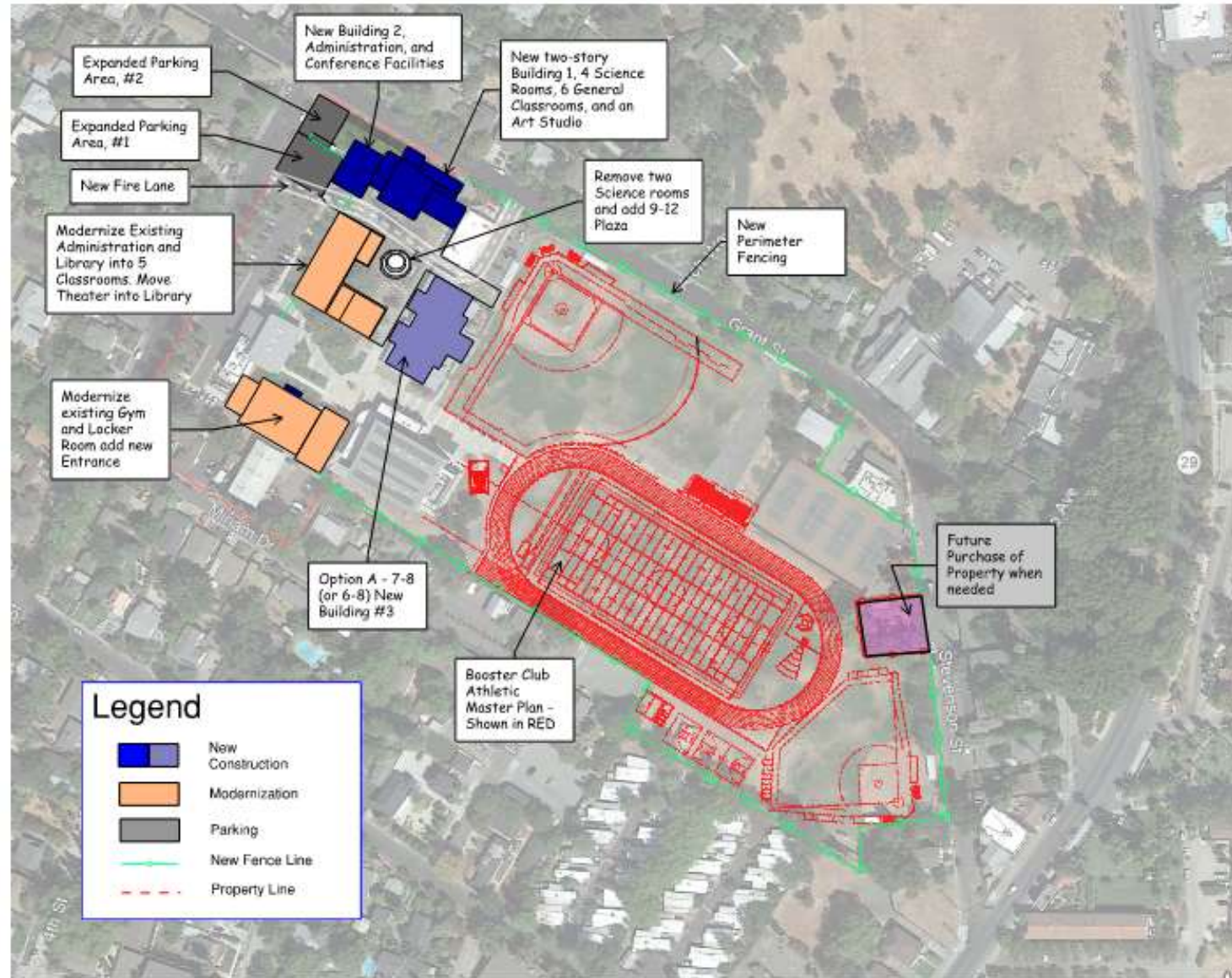




Calistoga Junior/Senior High School

Draft Plan

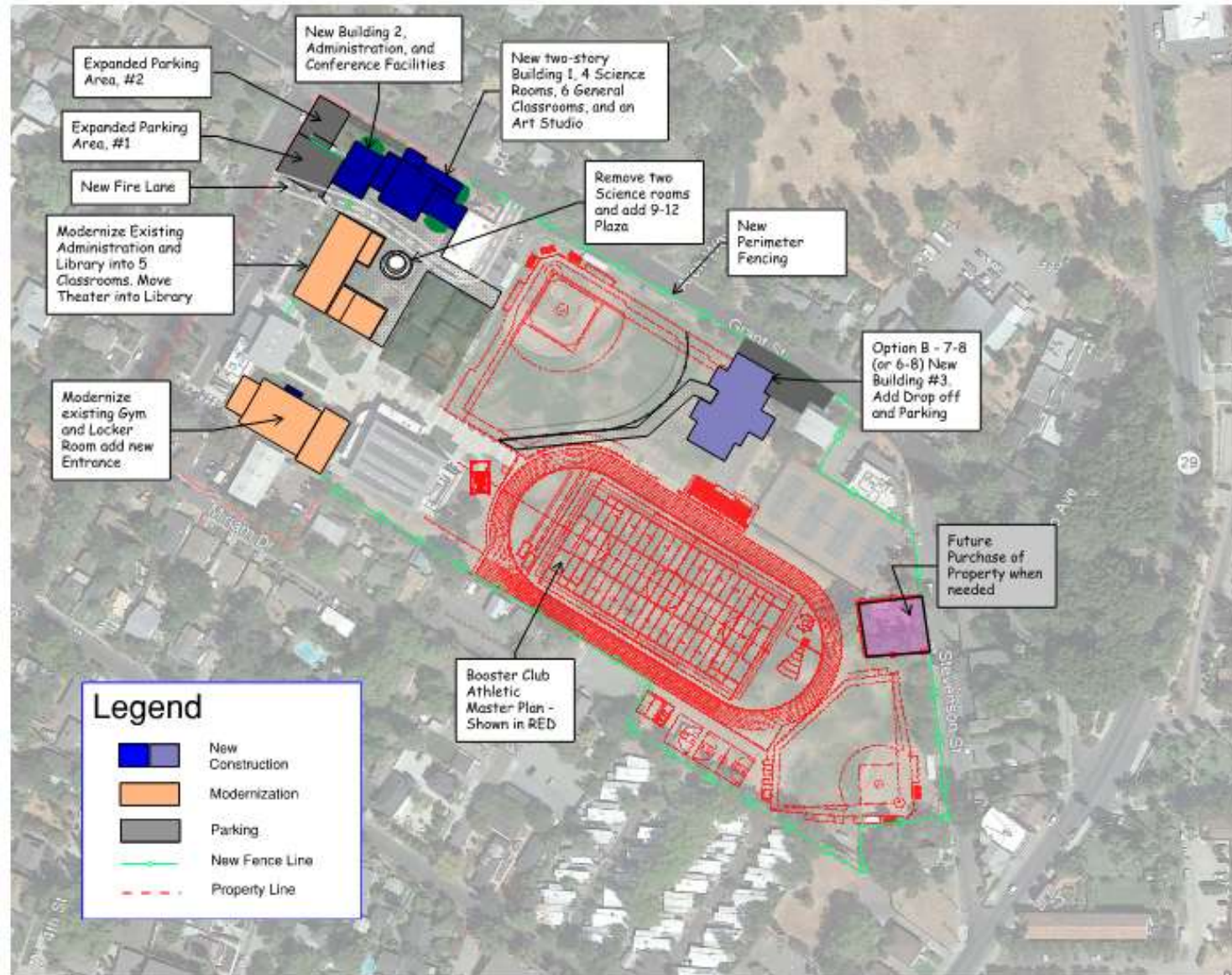
Alt A – 7/8 Location





Calistoga Junior/Senior High School

Draft Plan Alt B – 7/8 Location





Gallis Property

- Location is 6 blocks NE of CJSHS campus
- A CDE small site exemption would need to be secured
- Access is limited. Hwy 29 access will require a left turn lane
- Cost of construction would need to include utilities, multipurpose room, administration
- Cost of a sale vs development study should be completed



Integrated Educational
Planning and Programing





Road to the FMP

Activities:

- December 2nd Stakeholder Meetings
- February 8th - Board of Trustees Update
- March 8th - Draft Facilities Master Plan to the Board of Trustees
- April 5th - Final Facilities Master Plan to the Board of Trustees



Integrated Educational
Planning and Programing

